

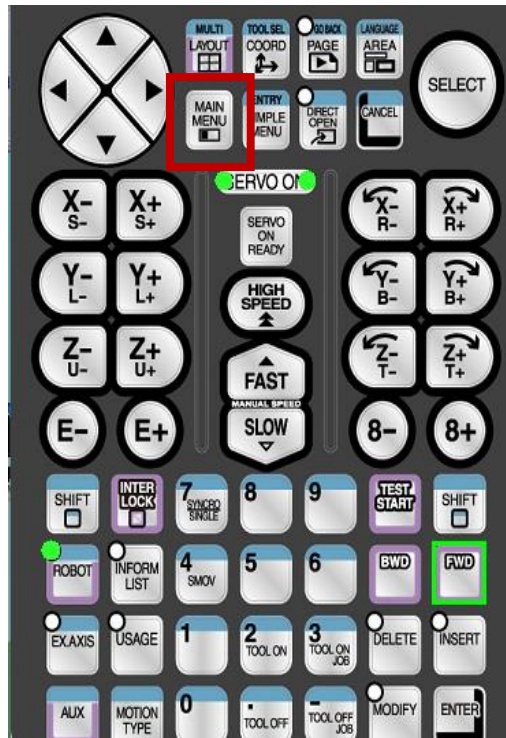
Safety Board FLASH Reset

Introduction

This document describes how to perform a Safety Board Flash Reset after making safety related changes or to clear Alarm 300, “VERIFY ERROR(SYSTEM CONFIG-DATA)”.

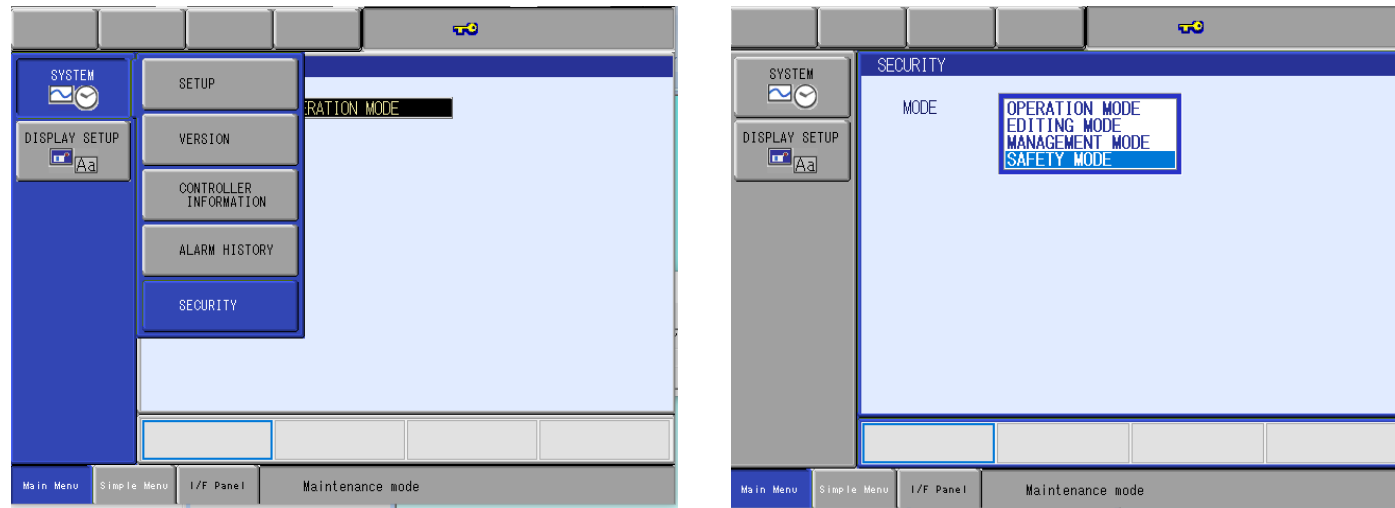
Procedure

- 1.) Boot the controller in the Maintenance Mode by holding the pendant MAIN MENU key while powering on the controller.



This document captures ideas, experiences, and informal recommendations from the Yaskawa Partner Support team. It is meant to augment – not supersede manuals or documentation from motoman.com. Please contact the Partner Support team at partnersupport@motoman.com for updates or clarification.

2.) Change the security level to SAFETY MODE

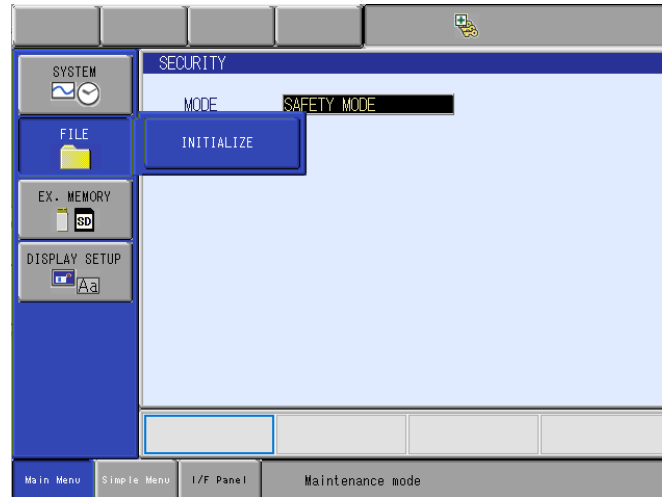


3.) Confirm Security level change by checking for 3 keys with green + at the top of the pendant screen.

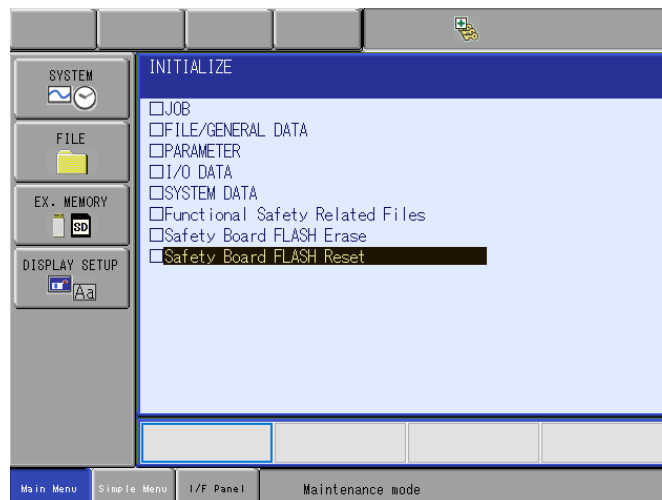


This document captures ideas, experiences, and informal recommendations from the Yaskawa Partner Support team. It is meant to augment – not supersede manuals or documentation from motoman.com. Please contact the Partner Support team at partnersupport@motoman.com for updates or clarification.

4.) Select FILE then INITIALIZE.

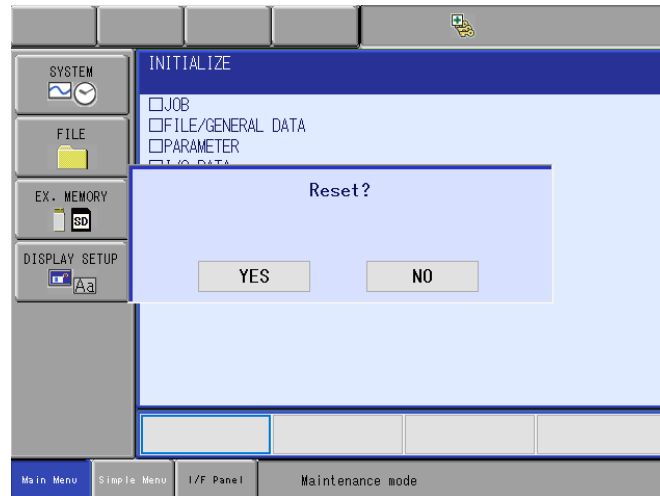


5.) Move the cursor to Safety Board FLASH Reset, then press SELECT on the pendant.

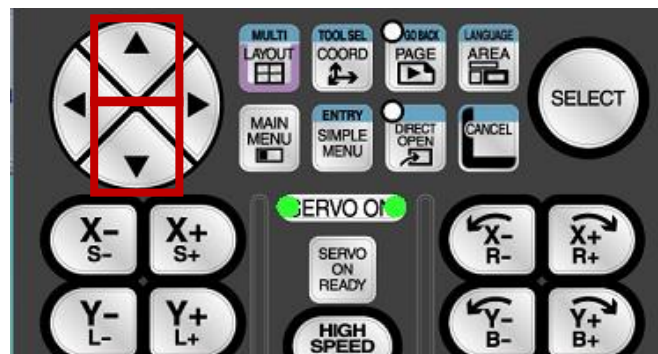


This document captures ideas, experiences, and informal recommendations from the Yaskawa Partner Support team. It is meant to augment – not supersede manuals or documentation from motoman.com. Please contact the Partner Support team at partnersupport@motoman.com for updates or clarification.

6.) Select YES in the Reset Confirmation window.



7.) Wait for the reset to complete. Once complete, the cursor on the screen will begin to move again when using the pendant up and down arrow keys.



8.) Reboot the controller into standard mode.